

DATA SHEET

Company		Date	15/02/2023
Project		Item	
		Ref No.	

SDS 100-400

Horizontal, double suction, single stage, axially split volute casing pump

Operating Point Data

Capacity	:	Power at Duty Point	:
Head	:	Frequency	: 50 Hz
Efficiency (%)	:	Voltage	: 400 V
Impeller Diameter	: 365 mm	Motor Power	: 37.00 kW
NPSHr	:	Nominal Speed	: 1465 rpm
Shut Off Head	: 46.8 m		

Liquid Data

Liquid	: Water	Density	: 998.30 kg/m ³
Temperature	: 20 °C	Viscosity	: 1.005 mm ² /s

Pump Data

Design	: Double suction, Single stage	Type of Coupling	: Standard
Installation	: Horizontal	Impeller Type	: Double Suction
Suction Flange	: EN 1092 PN 16-DN 150	Type of Bearing	: Grease Lubricated Bearing
Discharge Flange	: EN 1092 PN 16-DN 100	Type of Shaft Sealing	: Soft Packing
Direction Of Rotation	: Clockwise from the drive end		

Materials

Volute Casing	0.6025 / GG25 / EN-GJL-250 / ASTM A48 Class 40B
Impeller	0.6025 / GG25 / EN-GJL-250 / ASTM A48 Class 40B
Shaft	1.4021 / X20Cr13 / ASTM A276 Type 420
Bearing Housing	0.6025 / GG25 / EN-GJL-250 / ASTM A48 Class 40B
Casing Wear Ring	2.1050.01 / G-CuSn10 / ASTM B427 C90700
Shaft Protecting Sleeve	1.4021 / X20Cr13 / ASTM A276 Type 420

Operating Point Data

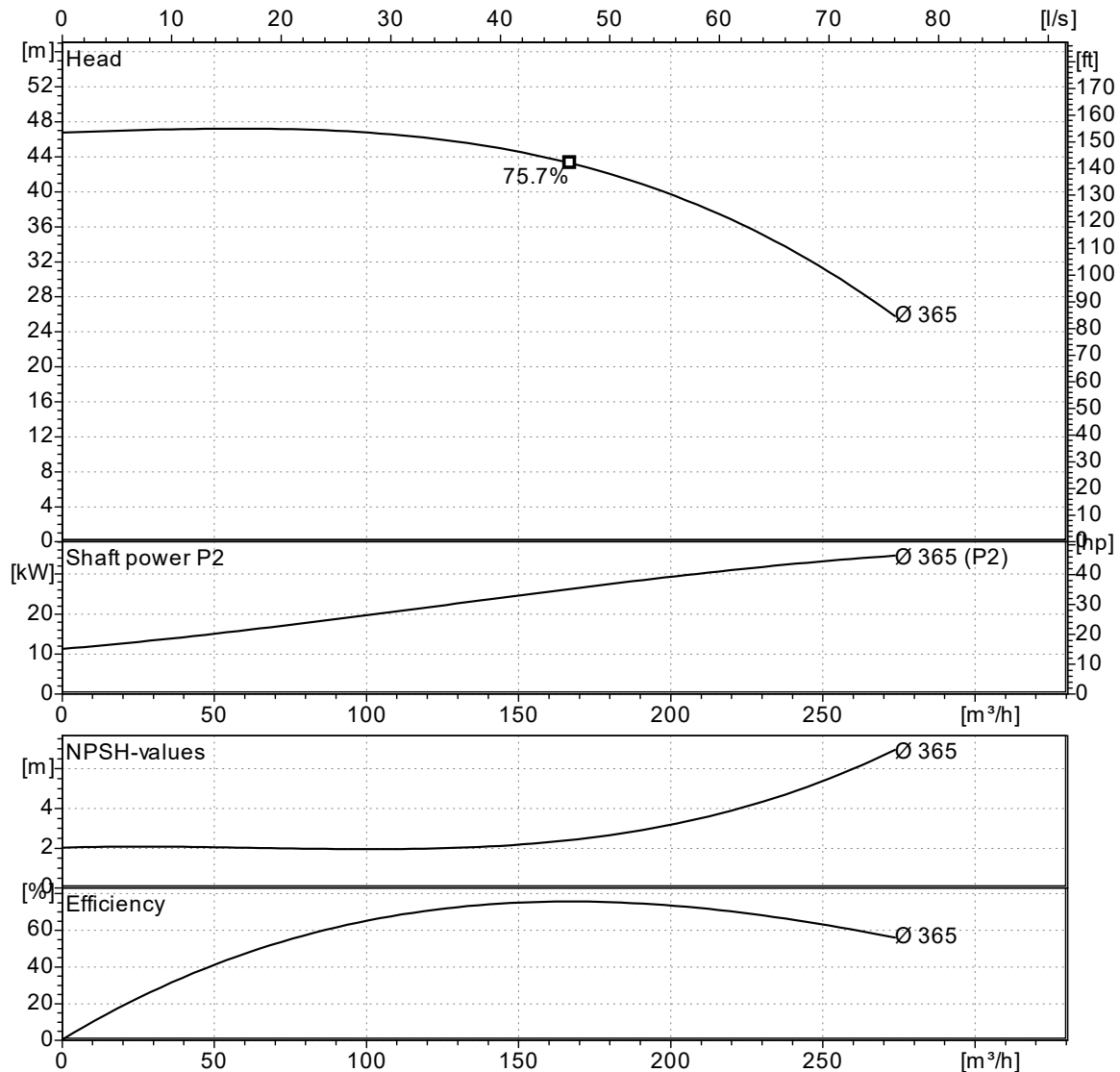
Company		Date	15/02/2023
Project		Item	
		Ref No.	

SDS 100-400

Horizontal, double suction, single stage, axially split volute casing pump

Capacity:
Head:
Efficiency (%):
Power at Duty Point:
Viscosity: 1.005 mm²/s

NPSHr:
Motor Power: 37.00 kW
Nominal Speed: 1465 rpm
Frequency: 50 Hz
Density: 998.30 kg/m³



Curves compatible with ISO 9906:2012 Gr 3B

NPSHa > NPSHr + 1m

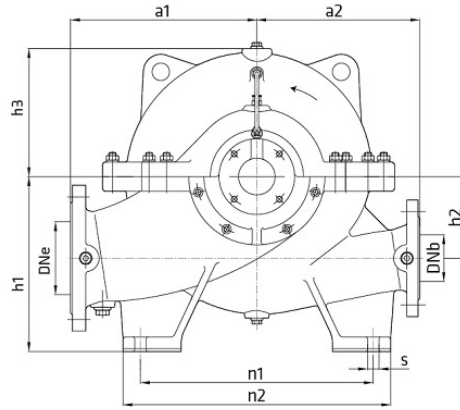
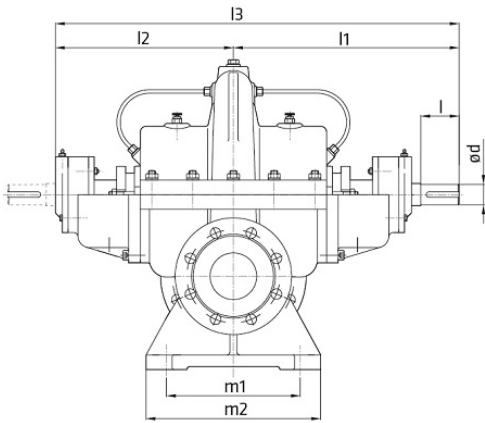
Note : The motor power is not sufficient for dotted area.

Company		Date	15/02/2023
Project		Item	
		Ref No.	

SDS 100-400

Horizontal, double suction, single stage, axially split volute casing pump

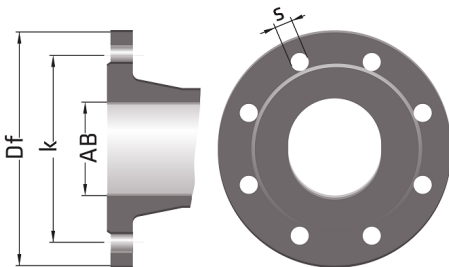
Pump Dimensions



Name	Value
a1	420
a2	370
d	42
DNb	100
DNe	150
h1	355
h2	170
h3	300
l	90
l1	450
l2	350
l3	800
m1	280
m2	340
n1	460
n2	540
s	20
W	290 kg

Note : l1 and l2 replaced each other since pump shaft rotates counter-clockw ise.

Flange Dimensions



Suction Flange

AB = 150
Df = 285
k = 240
n = 8
s = 23

Discharge Flange

AB = 100
Df = 220
k = 180
n = 8
s = 19

" n " number of holes

Company		Date	15/02/2023
Project		Item	
		Ref No.	

SDS 100-400

Horizontal, double suction, single stage, axially split volute casing pump

Motor Data

Efficiency Level	:	
Motor type	:	Three-Phase Asynchronous Motor
Motor Power	:	37.0 kW
Rated Speed	:	1450 rpm
Voltage	:	400 V
Rated Current	:	0.00 A
Frequency	:	50 Hz
Motor Phase	:	3
Service Factor	:	1.15
Insulation Class	:	F
Degree of Protection	:	IP 55
Efficiency	:	- %
Power factor	:	0.00